



# HOFMANN

*Precision Balancing Systems*

*Economy!*



*Laptop Computer*



*Box Computer*



*Desktop With Steel Cabinet*

*Computer Included!*

## **Economy Electronic Measuring Instruments Retrofit Packages**

- ♦ *Affordable computer systems using standard monitor, mouse, and keyboard*
- ♦ *Superior Hofmann signal processing technology*
- ♦ *Balancer software pre-installed in the computer, available with many options*
- ♦ *Desktop, laptop, and box computer versions available with optional cabinet workstation*
- ♦ *Compatible with hard-bearing or soft-bearing balancers*
- ♦ *Available for all brands of balance machines*

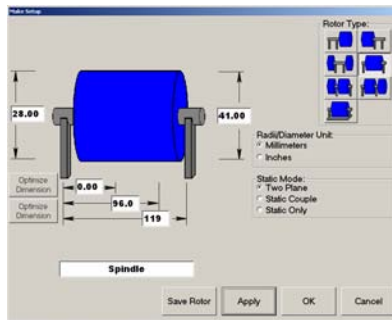
# Economy Electronic Measuring Instruments

**Hofmann Economy Electronic Measuring Instruments** are intelligent operator interface and precision controllers for your balancing system — in affordable desktop computer packages! It is appropriate for two-plane horizontal and two-plane or single-plane vertical unbalance measurements. The computers are factory-loaded with balancing software and supporting electronic components.

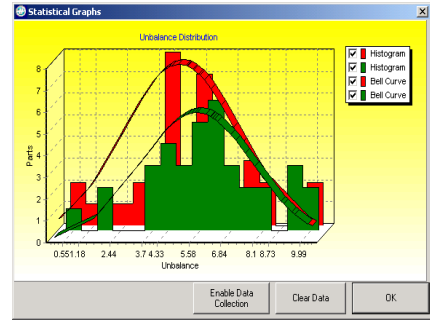
- ◆ Desktop, laptop, or box computer
- ◆ Microsoft® Windows® XP Professional
- ◆ Intuitive, Windows-style menu system for simple setup and operation
- ◆ Digital and polar-graphic display of unbalance amounts and angles
- ◆ Signal processor designed specifically for balancing applications
- ◆ Display software available in English, German, Spanish, Chinese, and other languages
- ◆ Statistical analysis software with printable reports
- ◆ Customizable security feature for setting both group and individual software permissions
- ◆ Network connection
- ◆ USB ports and CDROM drives
- ◆ Virtually unlimited rotor and machine data storage
- ◆ Standard software includes:
  - *Electronic Zeroing* ▪ *Tooling Compensation*
  - *Auto Ranging* ▪ *Averaging Over Time*
  - *Component Balancing* ▪ *Rotor Memory*
  - *Empirical Calibration* ▪ *Networking* ▪ *Serial Port*
  - *Printer Software* ▪ *ISO/API Tolerance Calculation Software*



Polar-graphic, two-plane display screen



Rotor setup window for two-plane machine



Graph display for optional statistical analysis software

## Typical Technical Specifications

Computer Type	Standard-grade desktop, laptop, or box computer; models may vary
Monitor Type	Flat 15-inch, TFT color, 1024 x 768 resolution, certified for low emissions, meeting USA and European safety guidelines
Processor	Intel® Pentium® III processor or equivalent, 1.26 GHz minimum
Memory	512 MB SDRAM minimum
Storage Drives	Hard disk, 40 GB minimum, and CDROM
Interfaces	Onboard Ethernet, multiple USB (universal serial bus) ports, standard mouse and keyboard
Operating System	Microsoft® Windows® XP Professional

**American Hofmann Corporation**  
 3700 Cohen Place, Lynchburg, VA 24501 USA  
 Tel: +1.434.522.0300 or +1.800.446.0997  
 Fax: +1.434.846.1340  
 Email: sales.us@hofmann-global.com

**AMERICAN  
 HOFMANN  
 CORPORATION**   
**Precision Balancing Systems**

www.hofmann-global.com